



VOLUME 10, ISSUE 6

FEBRUARY 2016

**INSIDE  
THIS ISSUE:**

Officer / Committee List	2
Events Calendar	3
President Msg	4
Highlights from January	5
February Meeting Info	6
Job Postings & PAOE Summary	7
Valentine's Day Dinner Dance	8
Committee Chair Updates	11
BOG Meeting Minutes	12
Student Member- ship Applica-	15
April Webcast	17
ASHRAE Scholarships	18
Buyer's Guide	19
Society News	21

## February ASHRAE Meeting

**Topic:** Building Load Analysis

**Presenter:** Robert Feduik, Carrier Corp.

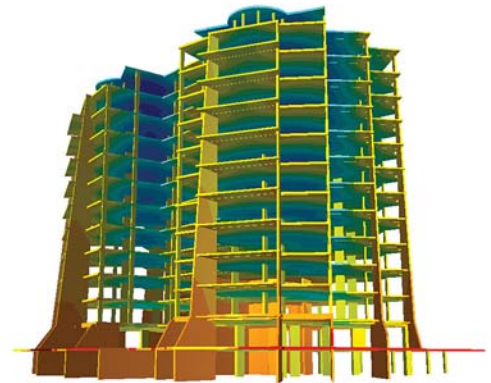
**When:** Monday February 8th, 2016

**Time:** 12 PM with Buffet Lunch Served

**Where:** Mario's Italian Steakhouse

2740 Monroe Ave, Rochester

**Cost:** \$25.00



Please RSVP by noon Thursday, February 4<sup>th</sup> to Tim Duprey,  
[tim.duprey@pres-services.com](mailto:tim.duprey@pres-services.com)

**Statements made in this publication are not expressions of the Society or of the chapter and may not be reproduced without special permission of the chapter.**



## Chapter Officers

**President**  
Christina Walter  
585-486-2148  
cmwalter@trane.com

**President Elect**  
Jeff Close, PE  
585-289-6816 / 218-0737(fax)  
jeff.close@pres-services.com

**Secretary**  
William J. Clark  
585-303-0729  
william.clark@DayAutomation.com

**Treasurer**  
Paul Kenna, PE  
585-272-4650  
pkmkenna@gmail.com

## Committee Chairs

**CTTC**  
Jeff Wiedrick 585-232-5137 x354  
jwiedrick@bergmannpc.com

**Grassroots Government Advocacy**  
Tom Burke 585-429-3594  
tom.burke@wegmans.com

**Refrigeration**  
Michael Nohle 585-216-9016  
mikenohle@aol.com

**Historian**  
Lee Loomis 585-738-3079/262-4156(fax)  
leeloomis46@gmail.com

**Membership**  
Jake Hall 585-869-5125  
jhall@proairplus.com

**YEA**  
Matt Kremers 585-398-8018  
mkremers@mcsmms.com

**Student Activities**  
Chris Lukasiewicz 585-381-3360 x135  
clukasiewicz@turnerengineering.com

**Education**  
Bill Murray 585-641-7121  
Bmurray@ec4b.com

## Board of Governors

Scott Edwards (3)  
585-742-4813  
scott.g.edwards@jci.com

Mike Benedict (3)  
585-490-2661  
mike@airsystemsbalancing.com

Branden Farnsworth-Weinblatt (2)  
585-364-1628  
bfweinblatt@popligroup.com

Tom Streber (2)  
585-272-9450  
tstreber@jswanson.com

Steve Dear (1)  
585-325-1290  
sdear@crosbybrownlie.com

Sam Scorsone (1)  
585-232-5135  
sscorsone@bergmannpc.com

**Newsletter Editor**  
Scott Edwards  
ashraerocnews@gmail.com

**Attendance & Reception**  
Timothy Duprey 585-330-6430  
tduprey@rochester.rr.com

**Publicity**  
Mark Kukla 585-232-3440  
mark@airsystemsbalancing.com

**Research Promotion**  
Matt Devlin 585-232-5135  
mdevlin@bergmannpc.com

**Webmaster**  
Kevin Wind 585-263-1280  
kwind@rochester.rr.com

**Nominating**  
Ed Burns 585-739-7548  
ejb@mechtechvac.com

**Buyer's Guide**  
Marianne Schumacher 585-217-3942  
marianne.schumacher@jci.com

ASHRAE 2015-2016 Meeting Schedule			
Date	Event	Theme	Location
Friday, 2/5/2016	Annual ASHRAE Valentines Dinner Dance <i>(Colgate Rochester Crozer Divinity School)</i>	---	Strathallan @ 7:00 PM
Monday, 2/8/2016	Building Load Analysis <i>(presented by Robert Feduik, Carrier Corporation)</i>	Membership Promotion	Mario's @ 12:00 PM
Monday, 3/14/2016	Chapter Facility Tour <i>(University of Rochester - Strong Hospital Central Plant)</i>	---	Strong Hospital @ 5:00 PM
Monday, 4/11/2016	Retro-Commissioning Existing Buildings <i>(presented by Al Rodgers &amp; Ron Sanger)</i>	<i>(PDH Pending)</i>	TBD @ 12:00 PM
Monday, 5/9/2016	Annual ASHRAE Golf Outing and Picnic <i>(Ravenwood Golf Course)</i>	---	9:30 AM Golf 4:30 - 8:00 Picnic

Note: Dates, topics and presenters are subject to change, any updates will be posted on our website ([rochester.ashraechapters.org](http://rochester.ashraechapters.org)).

ASHRAE Region I - Chapters Regional Conference (CRC)		
Date	Event	Location
8/18/16 - 8/20/16	<b><u>SAVE THE DATE</u></b> - The Rochester ASHRAE Chapter is hosting the Region I CRC.	Hyatt Downtown

## Mission Statement

ASHRAE will advance the arts and sciences of heating, ventilation, air conditioning, refrigeration and related human factors to serve the evolving needs of the public and ASHRAE members.



Shaping Tomorrow's  
Built Environment Today

## Vision Statement

- will be the global leader in the arts and sciences of heating, ventilation, air conditioning and refrigeration.
- will be the foremost, authoritative, timely and responsive source of technical and educational information, standards and guidelines.
- will be the primary provider of opportunity for professional growth, recognizing and adapting to changing demographics, and embracing diversity.

# President's November Message

## February President's Message:

Our January lunch meeting was very informative. I would like to thank **Mr. Kevin Diehl**, Vice President of Yasawa America for his presentation on AC Drives – Operation and Application considerations.

We hope to see you at our February meeting, as we welcome Robert Feduik, PE, LEED AP, Regional Software Engineer at Carrier Corporation, to present on Commercial Load Estimating - Building Load Analysis. Come and enjoy *Making Connections!*

On Friday, February 5<sup>th</sup>, 2016 the Rochester ASHRAE Chapter will be hosting its 59<sup>th</sup> Annual Valentine Dinner Dance at the Stratthallan Rochester.

**Jody and Matthew McGarry** put on a fantastic evening event. If you haven't attended it before, please consider joining us. If you've gone before, then you know all about the fantastic food, music, flowers and chocolates. It is a terrific time!

Ed Burns is the Chairperson for the Nominating Committee. If you feel that you or someone you know would make a good board member for the Rochester Chapter, please contact Ed at [ejb@mechtechvac.com](mailto:ejb@mechtechvac.com).

Lastly, the Rochester Chapter is honored this year to be hosting the ASHRAE Region I Chapter Regional Conference (CRC). Please mark your calendars for August 18-20, 2016. Our Chapter is currently seeking sponsorships to defray the costs associated with the CRC in an effort to reduce the costs for attendees of this event. Typically 100-150 Region I ASHRAE Members along with spouses and families attend the CRC. With help from our sponsors, not only will we be able to reduce the costs for members who typically attend the CRC, but also make the registration costs attractive for other members who normally would not consider attending the CRC. Rochester and the surrounding area has so much to offer and our goal is to provide all attendees of the CRC a most rewarding and enjoyable experience! If you're interested in becoming a sponsor for this event, please contact Jim Browe ([jbrowe@rfpeck.com](mailto:jbrowe@rfpeck.com)).



**Christina Walter, 2015-2016 President**

Please continue to check out our website at [www.rochester.ashraechapters.org](http://www.rochester.ashraechapters.org) for information on upcoming chapter meetings, current officer list and contact information, our current newsletter, CRC information and more! Or if Facebook is your preferred method of communication take a moment to 'like' us at [www.facebook.com/#!/ashraerochester](https://www.facebook.com/#!/ashraerochester).

Christina Walter  
2015-2016 President - Rochester Chapter

# Highlights from January ASHRAE Meeting



*Kevin Diehl, of Yasawa America, presents a talk on the operation and application of drives.*





# February Meeting Info

Please consider joining us at this upcoming ASHRAE meeting! As always, please forward this e-mail to anyone you may think would be interested in attending or benefit from this presentation. Your ASHRAE Rochester Chapter appreciates your support and looks forward to your participation each month!

## February 2016 ASHRAE Meeting << PDH APPROVED >>

**Date:** Monday, February 8, 2016

**Location:** Mario's Italian Restaurant

**Time:** 12:00 PM Lunch Buffet ... Presentation to start approx. 12:30pm

**Cost:** \$25.00

**Speaker:** Robert Feduik : Carrier Corporation

**Topic:** Building Load Analysis

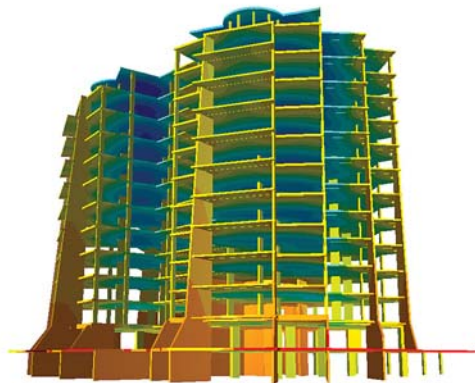
**Note:** (1) PDH

Remember, as an option, we have on-line payments available via PayPal.

<< Pay for Meeting Registration online via PayPal >> (no PayPal account required)  
Use the following link: <http://rochester.ashraechapters.org/meetings.html>

Cash or check payment is still accepted at the door with your reservation. Please let me know if you're even possibly going to be there!

Please RSVP no later than noon Thursday February 4<sup>th</sup> to Tim Duprey  
Phone: 585.330.6430 or e-Mail ... [tim.duprey@pres-services.com](mailto:tim.duprey@pres-services.com),  
[tduprey@rochester.rr.com](mailto:tduprey@rochester.rr.com) or [ASHRAERochester@gmail.com](mailto:ASHRAERochester@gmail.com)





This section of the newsletter is reserved for those firms wishing to advertise their desires to hire from the Chapters Membership.

If you are interested in utilizing this FREE service provided by the Rochester Chapter, please contact our Chapter President, Christina Walter 585-486-2148 or by email [cmwalter@trane.com](mailto:cmwalter@trane.com).

This service is available to ASHRAE members for any local firm in our industry looking for knowledgeable persons in the HVAC&R industry.

## Presidential Award Of Excellence



Download



Achievements

Chapter:

Fiscal Year:

▶ Chapter Operations	Par: 1000	Min Points: 400	Total Points: 300
▶ Chapter Technology Transfer	Par: 1050	Min Points: 450	Total Points: 400
▶ Grassroots Government Advocacy	Par: 650	Min Points: 500	Total Points: 0
▶ Historical Criteria	Par: 300	Min Points: 100	Total Points: 0
▶ Membership Promotion	Par: 800	Min Points: 500	Total Points: 385
▶ RP	Par: 1050	Min Points: 800	Total Points: 305
▶ Student Activities	Par: 500	Min Points: 300	Total Points: 0

## Like us on Facebook!



Visit our new Facebook page by searching for "ASHARE Rochester" on Facebook. Any ideas for additions or improvements email to Mark Kukla at [mark@airsystemsbalancing.com](mailto:mark@airsystemsbalancing.com). Keep up to date with current events and photos from recent meetings.



You are cordially invited to the  
**59th Annual  
Valentine Dinner Dance**  
Hosted by ASHRAE Rochester

Friday, February 5, 2016

The Strathallan Rochester - a DoubleTree by Hilton  
550 East Ave  
Rochester, New York

7:00pm Reception - Hors d'oeuvres & cocktails  
8:00pm Dinner - As you select  
9:15pm Dessert, Coffee and Dancing

**Menu Selections**

Pan roasted Atlantic salmon  
Roasted organic Chicken  
Wood roasted 6oz. Filet  
Chef's choice vegetarian option



For reservations, please mail or fax this registration form by January 24, 2016.

Make checks payable to Rochester Chapter ASHRAE and mail to:

Jody McGarry  
ABR Wholesalers, Inc.  
510 North Goodman Street  
Rochester, New York 14609  
Phone (585) 482-3601 | Fax (585) 482-6698

Name: \_\_\_\_\_ Beef · Chicken · Fish · Vegetarian

Name: \_\_\_\_\_ Beef · Chicken · Fish · Vegetarian

Number of people \_\_\_ x \$65\* per person = \$\_\_\_\_\_ (enclosed)





January 5, 2016

Dear ASHRAE Members,

On Friday, February 5, 2016, ASHRAE will be hosting its 59th Annual Valentine Dinner Dance at the Strathallan Rochester: a Double Tree by Hilton. ASHRAE is asking for your corporate support to donate \$350.00, billed to you as an advertising expense, to help defray the cost of this event. Your sponsorship will enable us to provide you with lively entertainment, a delicious meal, special desserts, and an evening with friends and colleagues you won't soon forget.

Your \$350 sponsorship comes with two complimentary dinners to the event, but this year, we're giving our sponsors a chance to save on more tickets! If you would like to sponsor the event and reserve a table for 10, consider becoming a gold-level sponsor. For \$825, you'll receive a reserved table, 10 dinners, and special "gold-level" sponsor designation.

As always, your sponsorship will be listed in the dinner program and dance flyers, as well as being listed in a full-page advertisement in the R.E.S monthly publication. You will certainly be recognized by your peers as an ASHRAE supporter.

An invoice is attached for your convenience. We thank you for your support and look forward to sharing this fantastic evening with you!

Very truly yours,

Jody McGarry  
Valentine Dance Committee



Invoice

Advertising for February 2016 Promotion

(Check One)       Sponsor: \$325       Gold-Level Sponsor: \$800

Please make check payable to: ROCHESTER CHAPTER ASHRAE and mail to:

Rochester Chapter ASHRAE  
c/o ABR Wholesalers, Inc.  
ATTN: Jody McGarry  
510 North Goodman Street  
Rochester, NY 14609

Commitment

We would like to support the Rochester ASHRAE 2016 Promotion and agree to fulfill our commitment by March 1, 2016.

Company Name\_\_\_\_\_

Signed by\_\_\_\_\_

Date signed\_\_\_\_\_

Please return your check or commitment no later than January 24, 2016 to ABR Wholesalers, Inc. Thank you for your support.

## Committee Chairs Updates

### Research Promotion

The winner from the January meeting was Tom Piekunka, who also donated his \$48 winnings back to Young Engineers in ASHRAE!

---

## Young Engineers in ASHRAE

YEA Tech Sessions- Hydronic System Basics presented by Branden Farnsworth-Weinblatt. This event will be February 3 from 6PM-9PM. Hosted at Modular Comfort Systems in Victor. Pizza and refreshments provided. Contact Matt Kremers.

YEA Tech Sessions: Airside Systems Basics will be presented March 2<sup>nd</sup>. More information to come.

# Board of Governors Meeting Minutes



Rochester Chapter - ASHRAE  
 Board of Governors Meeting  
 January 7<sup>th</sup>, 2016 7:30 AM  
 Location: Trane, 75 Town Centre Dr.  
 Rochester, NY 14623

## AGENDA

President / CRC Delegate	Christina Walter	X
President Elect / Program/ CRC Alternate	Jeff Close	X
Secretary	Bill Clark	X
Treasurer	Paul Kenna	X
Immediate Past President	Ed Burns	X
Board of Gov. (1)	Steve Dear	X
Board of Gov. (1)	Sam Scorsone	
Board of Gov. (2)	Branden Farnsworth-Weinblatt	X
Board of Gov. (2)	Tom Streber	
Board of Gov. (3)	Mike Benedict	
Board of Gov. (3)	Scott Edwards	
Attendance	Tim Duprey	X
Historian	Lee Loomis	X
Membership Promotion	Jake Hall	
Newsletter Editor	Scott Edwards	
Resource Promotion	Matt Devlin	X
Awards	Al Rodgers	
CTTC	Jeff Wiedrick	X
Education	Bill Murray	
Publicity	Mark Kukla	X
Website	Kevin Wind	
YEA Chair	Matt Kremers	X
Student Activities	Chris Lukasiewicz	X
Nominating (2 <sup>nd</sup> Past President)	Michelle Sommerman	
Picnic/Golf Chair	Jim Browe	X
Buyers Guide	Marianne Schumacher	X
Valentine's Dinner Dance	Jody M. McGarry	X
Chapter Tech Energy & Govt Activities	Tom Burke	X
Refrigeration	Mike Nohle	

# Board of Governors Meeting Minutes

**Roll Call:** The above noted individuals were present.

**Call to Order:** 7:32 AM

## Meeting Minutes:

1. Call to Order Chris Walter
2. Roll Call Bill Clark
3. President Elect / Program Jeff Close
  - Upcoming meeting to be on AC Drives.
  - Remaining program is set.
4. Approval of previous meeting's minutes All
  - Motion to approve - Jeff Wiedrick
  - Second - Tim Duprey
5. Treasurer's Report 2015/2016 Paul Kenna
  - First Niagara has been sold to Key bank, the transition from HSBC to First Niagara required multiple trips to the bank.
  - Paul to look into changing banks.
6. Committee Reports
  - Technology Transfer Committee Jeff Wiedrick  
 Program/Tech Sessions  
 Technology Transfer
    - No Update
  - Membership Jacob Hall
    - No update
  - Student Activities Chris Lukasiwicz
    - Chis has been working with Bill Horton at MCC about starting a student chapter at MCC
  - Education Bill Murray
    - No report.
  - YEA Matt Kremers
    - Matt Kremers and Brandon Farnsworth-Weinblatt are working on a series of YEA courses
    - 2 ½ to 3 hours courses will be offered at the Popli office on the 1<sup>st</sup> Wednesday of every month.
  - Awards & Recognition Al Rodgers
    - No report
  - Resource Promotion Matt Devlin
    - Matt is working on an email campaign to talk to donors who have not donated in recent years.
    - Matt is looking into a skeet shooting event to draw attention to RP.
  - Refrigeration Mike Nohle
    - Mike Nohle and Sam Scorsone are working together on refrigeration committee plans.
  - Grassroots Government Advocacy Tom Burke
    - Tom has talked with Henry Manczyk about the grassroots government advocacy committee background.
  - Newsletter Scott Edwards
    - Chris Walter to talk to Scott Edwards about doing a write up on members each month



# Board of Governors Meeting Minutes

- o Lee Loomis has offered to write an article about Jim Ormond who was a 44 year member that passed away recently.
  - **Buyers Guide** Marianne Schumacher
    - o Marianne has a layout for a buyer's guide email so that the advertisers can see what they will be getting for their money.
  - **Attendance** Tim Duprey
    - o December meeting was well attended with 80 people.
    - o 2/3 to ¾ of people are using PayPal now.
  - **Historian** Lee Loomis
    - o Lee is suggesting having someone else be historian for a few years to increase PAOE points gained for 2<sup>nd</sup> and 3<sup>rd</sup> year historians.
    - o Lee would like to work with someone to help train them with what he does.
  - **Publicity** Mark Kukla
    - o Mark would like to get an article into the RBJ or D&C about the CRC.
  - **Website** Steve Dear
    - o After review we are in good shape with the website.
    - o 6 items have been identified that can increase our PAOE points based on website contents.
  - **Nominating** Ed Burns
    - o Ed is working on a nominating committee.
    - o Ed would like to make an announcement at the February meeting.
  - **CRC 2016 General Chair** Jim Browe
    - o Jim has reached out to Steve Sill about setting up the website and has gotten the information to set up a website for the CRC. - If costs are less than \$500 Jim will proceed.
    - o Committee meeting next week.
  - **Valentine's Dance** Jody McGarry
    - o Jody to mail out invitations, the mass mailing for the flyer will be emailed out instead of mailed.
    - o Sponsorship letters have been sent out.
    - o Venue and menu are set.
7. **Old Business Campus**
- Log PAOE points in monthly
  - Create/Update your Biography on www.ASHRAE.org website
  - CRC 2016 Rochester, August 18-20
8. **New Business**
- Grass Roots community project possibilities, STEM Outreach
  - New location for meetings is being researched
  - Ed Burns needs ideas for speakers for the RES Symposium.
  - Lee Loomis brought to the attention of the BOG the RES Gala, for tables of 10 affiliate groups like ASHRAE can get a reduced rate of \$800.
    - o Gala is Saturday April 16th
    - o The chapter has committed to 1 table that will be populated by members at the \$80 rate.
    - o An email will be sent to promote the Gala and request reservations.
9. Next BOG meeting: Friday, February 5<sup>th</sup> 7:30 am at Trane.
10. Adjourn 8:45 am



# ASHRAE Student Membership Application

## What You'll Get With Your ASHRAE Student Membership!

### What's "Cool" In ASHRAE

- ASHRAE promotes energy efficiency, savings and recovery
- ASHRAE reports on building controls, automation and integration
- ASHRAE focuses on green building issues and green technology
- ASHRAE maintains standards for indoor air quality
- ASHRAE promotes solar and other alternative energy sources
- ASHRAE offers certification programs, online learning opportunities and courses and seminars at ASHRAE Conferences

### How Can ASHRAE Help You?

- Provide access to new technology
- Offer professional development opportunities
- Create opportunities for networking
- Offer online continuing education programs and eLearning programs

### Student Member Benefits

- Access to members-only web pages
- Discounts on ASHRAE Handbooks
- Monthly ASHRAE Journal - print and digital
- HVAC&R Industry and Society Connections eNewsletters
- Complimentary ASHRAE Annual and Winter Conference registration (AHR Expo, Student Program, Technical Sessions)
- Virtual online HVAC&R resume posting, job and internship searching program

### ASHRAE Student Member Opportunities

- Society and chapter-level scholarships for both undergraduate and graduate engineering students
- Discounts for student members on select publications, go to [www.ashrae.org/bookstore](http://www.ashrae.org/bookstore) for more information
- Student Design Competition
- Networking with local ASHRAE Chapters
- Senior Undergraduate Project Grant Program
- At the student branch level, you'll enjoy meeting other students with similar interests - if your school hasn't yet started a student branch, take charge and contact a faculty member and ask for help on getting started!

You can continue your student membership after college with the ASHRAE SmartStart Program. After you graduate, you pay \$20 for the first year, \$50 for the second and the third years before advancing to regular member dues!

**Join ASHRAE students on Facebook  
Visit [www.ashrae.org/students](http://www.ashrae.org/students) to join!**



FIRST NAME:

LAST NAME:

DATE OF BIRTH (mm/dd/yyyy)

Current Mailing Address: (this will be where all correspondence will be sent unless otherwise specified)

Street Address: \_\_\_\_\_ Apt. # \_\_\_\_\_ City: \_\_\_\_\_

State/Province: \_\_\_\_\_ Postal Code: \_\_\_\_\_ Country: \_\_\_\_\_

Email: \_\_\_\_\_ Alternate email: \_\_\_\_\_ Phone: \_\_\_\_\_

Permanant Mailing Address: (during the Summer Months and after graduation)

Check if Current Address is the same as Permanent Address

Street Address: \_\_\_\_\_ Apt. # \_\_\_\_\_ City: \_\_\_\_\_

State/Province: \_\_\_\_\_ Postal Code: \_\_\_\_\_ Country: \_\_\_\_\_

Email: \_\_\_\_\_ Alternate email: \_\_\_\_\_ Phone: \_\_\_\_\_

ASHRAE protects contact information provided by its members and customers. To view ASHRAE's privacy policy visit [www.ashrae.org/privacy-policy](http://www.ashrae.org/privacy-policy).

All student applicants must have the name and member number of an ASHRAE member serving as their student sponsor. If your Student Branch Advisor is an active Associate or Full member, he/she can serve as your sponsor. If you need assistance locating a sponsor, please email [students@ashrae.org](mailto:students@ashrae.org) or call 678-539-1212. Also, you must list the name, phone and email address of your faculty advisor or course instructor.

Sponsor Name: \_\_\_\_\_ ASHRAE Member #: \_\_\_\_\_

Advisor/Instructor: \_\_\_\_\_ Phone: \_\_\_\_\_

Email: \_\_\_\_\_

To receive your subscription to the ASHRAE Journal, please answer the following questions by entering the appropriate codes in the spaces provided.

Which best describes your firm? \_\_\_\_\_

- 11. Consulting Engineering
- 12. Architect/Architectural & Eng Services
- 15. Design/Build
- 21. Contractor
- 26. Property Mgmt & Dev
- 31. Industrial Facility
- 41. Commercial Facility
- 42. Government, Healthcare, Education
- 43. Utility
- 51. Manufacturer/HVAC&R Equipment
- 61. Manufacturer's Representative
- 62. Sales Engineering
- 71. Wholesaler or Distributor
- 83. Library
- 84. Technical, Professional or Trade Association
- 86. Student \*\*\*
- 91. Other (Please Specify) \_\_\_\_\_

Which best describes your title? \_\_\_\_\_

- B. President
- C. Partner
- D. Associate
- E. Owner
- F. Vice President
- G. Vice President Eng, Chief Engineer
- K. Design Engineer
- L. Project/Application Engineer
- O. Facility Engineer/Manager
- P. Research/Development Engineer
- R. Sales Engineer, Sales
- S. Purchasing Agent
- T. Draftsperson
- U. Estimator
- W. Technician
- X. Instructor, Professor
- Y. Student \*\*\*
- Z. Librarian
- ZZ. Other (Please Specify)

ASHRAE Society Dues include \$6.00 for ASHRAE Journal. This amount is not deductible from Membership dues.

I would like to participate in the activities of the \_\_\_\_\_ ASHRAE Chapter.

School Name: \_\_\_\_\_

Street Address: \_\_\_\_\_ City \_\_\_\_\_ State: \_\_\_\_\_

Country: \_\_\_\_\_ Postal Code \_\_\_\_\_

Expected Graduation Date: \_\_\_\_\_

Full time:  Part time:  Degree: \_\_\_\_\_

\*Classification: Freshman  Sophmore  Junior  Senior  Masters/PhD.

ASHRAE Student Membership \$20.00 USD

ASHRAE Handbook - Fundamentals  IP  SI

(you will receive the most current edition of Fundamentals)

More than 900 pages of HVAC&R technical information and it includes the CD! (List Price \$195)

Student Member Price: \$49.00 USD \$ \_\_\_\_\_ USD

Total \$ \_\_\_\_\_ USD

\*Additional books are available at [ashrae.org/studentbookstore](http://ashrae.org/studentbookstore)

\*Please allow up to 30 days to receive new member packets. For U.S. book orders, allow 3-5 business days from processing. For interntional locations and Canada, allow 7-10 business days from processing.

\*\*Please complete the ENTIRE application to ensure accuracy. Incomplete applications will NOT be processed.\*\*

Method of payment:  VISA / Master Card  American Express  Diner's Club  Check or money order enclosed\*

Card Number: \_\_\_\_\_ Expiration Date \_\_\_\_\_ CW No. \_\_\_\_\_ Amount: \_\_\_\_\_

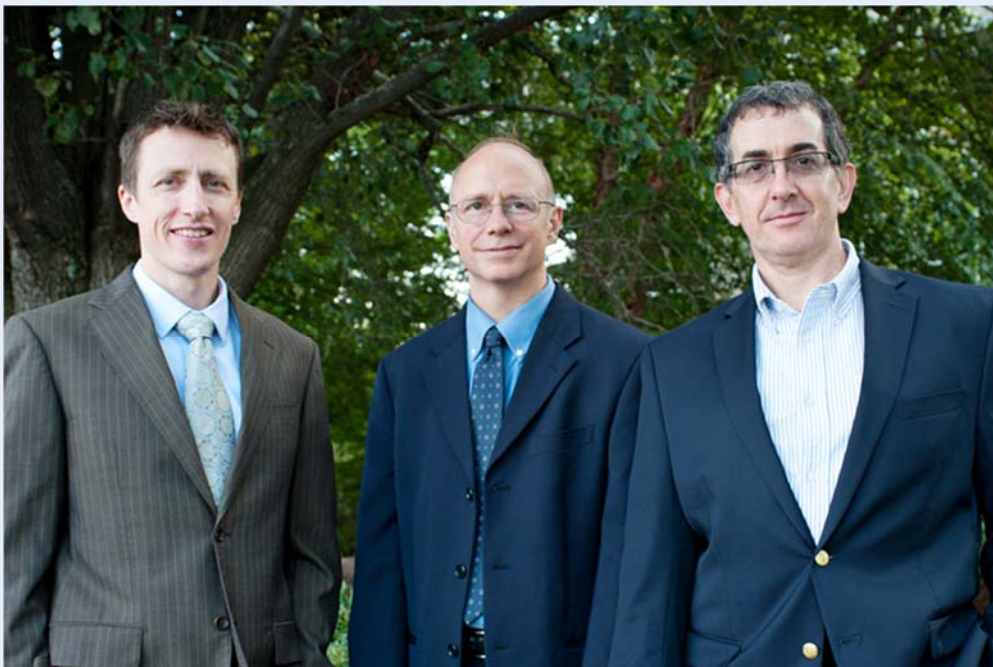
Signature: \_\_\_\_\_ Date: \_\_\_\_\_

Print Name (as it appears on card): \_\_\_\_\_

\*Checks will be accepted in U.S and Canadian funds. Credit Card payments will be accepted in U.S. funds only.



## Coming April 2016 - Making Net Zero Net Positive: Solving the Efficiency & Cost Paradox.



Save the date for the April 21, 2016 ASHRAE Webcast - Making Net Zero Net Positive: Solving the Efficiency & Cost Paradox. This webcast will feature industry experts who will define the importance of, and why we should strive for, net zero in the built environment. Viewers will be able to identify behaviors that create more effective ownership, design and construction teams, and will recognize the value of a collaborative process in building design and the impact on costs. With a strong emphasis on real-world applications, the program will also discuss the primary technical and financial challenges in achieving net zero buildings, and where this design approach can best be applied.

*<https://www.ashrae.org> and select Memberships & Conferences, "WEBCASTS"*



## Tips for ASHRAE Scholarship Applicants

### Make sure ...

- You meet all applicable criteria
- You read the application carefully and answer all questions completely and honestly.
- The application and all required documents are submitted or postmarked on or before the applicable deadline.
- Your application is NEAT, legible (typed or handwritten clearly), and proper English (correct grammar and spelling) is used when responding to essay questions.
- To take time to submit a brief, non-required introductory cover letter
- You are clear and thorough when stating goals and financial need.
- You contact the nearest ASHRAE chapter for an interview with the Student Activities Chair or other officer to learn more about the Society.
- You find out if your school hosts an ASHRAE student branch.
- You contact ASHRAE headquarters if you have any questions and to ensure your application has been completed and submitted properly.

More information on the scholarship and details on how to apply can be found at [www.ashrae.org/scholarships](http://www.ashrae.org/scholarships).



# Get Your Company into the 2016 Buyers Guide Today!

What are the benefits to being in the ASHRAE Buyers Guide??

- **Publication of your business and services**
- **Attract new customers**
- **Generate visibility and awareness at ASHRAE participating events inside and outside of the industry**
- **Strengthen communications between, manufacturers, sales representatives, engineers who specify products and contractors who purchase / install those products**





## Rochester Chapter

### Article Details

- Not only limited to ASHRAE associated members
- Cost is \$125.00
- Checks accepted made out to ASHRAE Rochester Chapter or pay on website via PayPal
- May be color or B&W
- Size should be 8 ½ x 11 PDF format
- Updated on an annual basis

Visit the Rochester ASHRAE website to check out more or pay by PayPal!

Have Questions??

Contact: Marianne Schumacher  
585-217-3942

 Like us on Facebook | 
  Follow us on Twitter | 
  Join the conversation on ASHRAEExchange



# News

1791 Tullie Cir. NE | Atlanta, Ga. 30329-2305 | 404-636-8400 | [www.ashrae.org](http://www.ashrae.org)

For Release:  
Jan. 6, 2016

Contact: Jodi Scott  
Public Relations  
678-539-1140  
[jscott@ashrae.org](mailto:jscott@ashrae.org)

## Balancing Energy, Comfort in Homes: Residential Systems Addressed at ASHRAE Winter Conference

ATLANTA – Over the last 15 years single family homes have been built tighter, making them much more energy efficient and comfortable compared to drafty houses of the past. But there's a tradeoff.

"While the energy benefits are great, air tight homes demand thoughtful HVAC&R design for ventilation and building pressure management," Lew Harriman said. "The big issues involve adequate outdoor air for kitchen and bathroom exhausts and combustion appliances, plus the continuous ventilation now required by ASHRAE's residential indoor air quality standard, 62.2."

Air tightness is indirectly connected to indoor air quality (IAQ) because IAQ is connected to total ventilation, and leaky buildings can contribute to total ventilation. But it is much more energy efficient to provide ventilation mechanically vs. through air leakage, Harriman notes.

Harriman is chairing a session that addresses residential building applications at the ASHRAE 2016 Winter Conference, which takes place Jan. 23-27, Orlando, Fla. The ASHRAE co-sponsored AHR Expo is being held Jan. 25-27, next door at the Orange County Convention Center. To register for the ASHRAE Conference, which includes free access to the Expo, visit [www.ashrae.org/orlando](http://www.ashrae.org/orlando).

The Technical Program features eight tracks, some 100 sessions and more than 300 speakers. It runs Sunday, Jan. 24, through Wednesday, Jan. 27, and offers over 200 Professional Development Hours, as well as Continuing Education Units, which can be applied toward a Professional Engineering license in many states, including the state of Florida.

The seminar, High Performance Residential Building Applications and Issues, takes place Monday, Jan. 25. Experts from the natural gas industry, the U.S. Department of Energy and the Lawrence Berkeley National Laboratory will describe results of their decades of real-world experience measuring and understanding the behavior of tight houses. They will provide practical tips and traps to help both HVAC professionals and home owners ensure safe, high quality indoor air in the tight, net-zero energy houses of the 21st Century, according to Harriman.

The seminar program is part of the Technical Program track on modern residential systems.

"Engineering for residential HVAC and plumbing systems and equipment used to be referred to as catalog engineering: for a two bedroom house choose one from Column A; for a three bedroom house choose one from Column B," Jennifer Leach, chair of the track and of the Conference Technical Program, said. "Recent years have seen a boom in energy efficient solutions for the savvy, fiscally-conscience home owner. From glazing to water heating to lighting, speakers in this track are going to provide updates on the latest advances for the residential market."

***Continued on next page***

 Like us on Facebook |  Follow us on Twitter |  Join the conversation on ASHRAEExchange



# News

---

1791 Tullie Cir. NE | Atlanta, Ga. 30329-2305 | 404-636-8400 | [www.ashrae.org](http://www.ashrae.org)

For Release:  
Jan. 6, 2016

Contact: Jodi Scott  
Public Relations  
678-539-1140  
[jscott@ashrae.org](mailto:jscott@ashrae.org)

## ***Continued from previous page***

Other sessions that incorporate residential are:

- Residential Smart Appliances: Enabling Electric Grid Resilience and Demand Response
- Heat Pump Applications for Domestic Hot Water
- Considering Occupancy Behavior in Design and Operation for Residential Buildings
- Challenges and Opportunities in Residential Construction
- How Can ASHRAE Help Provide Affordable High Performance Residential Buildings in Countries with Developing Economies?
- Net Zero Energy Home Strategies from Coast to Coast
- An Assessment of Unconventional Heat Pump Sizing with Variable Capacity Technology
- Residential Energy Savings from Fuel Switching, Hot-Gas Bypass and Conditional Demand Analysis
- Updates and Perspectives on the New Version of ICC 700, The Residential Green Building Standard
- Acoustics in Multi-Family Residential Environments
- Metrics Matter: How Should We Judge Energy Performance?
- High Performance Residential Building Applications and Issues
- Introduction to Biomass Heating and Hydronics for Young Engineers

ASHRAE, founded in 1894, is a global society advancing human well-being through sustainable technology for the built environment. The Society and its more than 54,000 members worldwide focus on building systems, energy efficiency, indoor air quality, refrigeration and sustainability. Through research, standards writing, publishing, certification and continuing education, ASHRAE shapes tomorrow's built environment today. More information can be found at [www.ashrae.org/news](http://www.ashrae.org/news).

 Like us on Facebook |  Follow us on Twitter |  Join the conversation on ASHRAEExchange



# News

---

1791 Tullie Cir. NE | Atlanta, Ga. 30329-2305 | 404-636-8400 | [www.ashrae.org](http://www.ashrae.org)

For Release:  
Jan. 11, 2016

Contact: Jodi Scott  
Public Relations  
678-539-1140  
[jscott@ashrae.org](mailto:jscott@ashrae.org)

## ASHRAE Announces Call for Programs for 2016 Annual Conference

ATLANTA – A call for programs has been announced for ASHRAE’s 2016 Annual Conference, June 25-29, St. Louis, Mo.

“A new ‘Smart Building Systems’ track for this conference addresses the revolution in information technology applied to the built environment,” Tom Kuehn, Conference Program chair, said. “Weather and time of day utility rate forecasting, distributed sensors and remote monitoring and control are all included in the track. Topics key to personal success are included in the ‘Professional Skills Beyond Engineering’ track. Programs describing advances in refrigeration technology are given special emphasis and other tracks cover more conventional topics.”

Programs are sought for the following tracks: Advances in Refrigeration Systems and Alternative Refrigerants; Fundamentals and Applications; HVAC Systems and Equipment; Smart Building Systems/Remote Monitoring and Diagnostics; Indoor Environment: Health, Comfort, Productivity; Professional Skills Beyond Engineering; and Renewable Energy Systems and Net Zero Buildings. Programs are also sought for the fourth annual Research Summit, which reports results on any aspect of ASHRAE-related research. In addition, programs focusing on practical applications and utilizing case studies are requested.

Programs are requested for the following program types: Seminars, which include 1-4 presentations on a similar topic; Workshops, which allow equal time for 1-2 presentations and discussion; and Forums, which are discussion-based sessions with no presentations.

A call for programs (non-paper based presentations) is now open through Feb. 8, 2016. To submit a proposal or for more information, go to [www.ashrae.org/Stlouis](http://www.ashrae.org/Stlouis).

The ASHRAE 2016 Annual Conference will take place at the America’s Center Convention Complex and Renaissance St. Louis Grand Hotel. The event will attract some 2,500 conference attendees and meeting participants.

ASHRAE, founded in 1894, is a global society advancing human well-being through sustainable technology for the built environment. The Society and its more than 54,000 members worldwide focus on building systems, energy efficiency, indoor air quality, refrigeration and sustainability. Through research, standards writing, publishing, certification and continuing education, ASHRAE shapes tomorrow’s built environment today. More information can be found at [www.ashrae.org/news](http://www.ashrae.org/news).



Like us on Facebook | Follow us on Twitter | Join the conversation on ASHRAEExchange



# News

1791 Tullie Cir. NE | Atlanta, Ga. 30329-2305 | 404-636-8400 | [www.ashrae.org](http://www.ashrae.org)

For Release:  
Jan. 13, 2016  
Contact: Jodi Scott  
Public Relations  
678-539-1140  
[jscott@ashrae.org](mailto:jscott@ashrae.org)

## UK BIM Requirement Pushes Industry Forward: ASHRAE Winter Conference Features BIM Sessions for Practitioners

ATLANTA – While the United Kingdom’s Government Construction Strategy mandated use of Level 2 building information modeling (BIM) on all public sector projects by 2016, recent surveys show that fewer than 15 percent of firms are fully prepared to do so.

“There is a very strong push for BIM in the UK,” Tim Dwyer said. “While the majority of firms have indicated they are not ready for the mandate (84 percent), nearly two-thirds have indicated it will be good for the building industry and is the future for building services.”

Successful collaborative efforts within firms and between firms for BIM are presented in a session Dwyer is chairing at the ASHRAE 2016 Winter Conference, which takes place Jan. 23-27, Orlando, Fla. The ASHRAE co-sponsored AHR Expo is being held Jan. 25-27, next door at the Orange County Convention Center. To register for the ASHRAE Conference, which includes free access to the Expo, visit [www.ashrae.org/orlando](http://www.ashrae.org/orlando).

The Technical Program features eight tracks, some 100 sessions and more than 300 speakers. It runs Sunday, Jan. 24, through Wednesday, Jan. 27, and offers over 200 Professional Development Hours, as well as Continuing Education Units, which can be applied toward a Professional Engineering license in many states, including the state of Florida.

Dwyer’s seminar focuses on “Delivering Building Performance through Collaboration and Integration.” He notes that with an ever-increasing demand for more stringent building environmental requirements, collaboration across the building ‘team’ is critical to deliver effective buildings that meet standards and performance metrics.

“Successful projects do not come from ‘silo’ working practices, and increasingly the engineer will be the lead for interdisciplinary design solutions that benefit from the integrating tools, which include BIM, and technologies as well as timely, and properly informed, client communication and interaction,” he said. The seminar takes place Tuesday, Jan. 26.

Other sessions that incorporate BIM are:

- Do Tall, Super Tall and Mega Tall Buildings Consume More Energy than Conventional Buildings or Do They Conserve More Energy?
- New CFD Techniques for Design of Air Distribution Systems
- BIM Strategies for Energy Modeling and MEP Design Consulting
- Improving the Design and Performance of Ground Source Heat Pump Systems
- Building Modeling Simulation
- Building Modeling and Optimization
- Advancements in Energy Modeling
- Strategies to Improve Building Models and Operation
- Simulation for Cutting-Edge Building Design

ASHRAE, founded in 1894, is a global society advancing human well-being through sustainable technology for the built environment. The Society and its more than 54,000 members worldwide focus on building systems, energy efficiency, indoor air quality, refrigeration and sustainability. Through research, standards writing, publishing, certification and continuing education, ASHRAE shapes tomorrow’s built environment today. More information can be found at [www.ashrae.org/news](http://www.ashrae.org/news).

Like us on Facebook | Follow us on Twitter | Join the conversation on ASHRAExCHANGE



# News

1791 Tullie Cir. NE | Atlanta, Ga. 30329-2305 | 404-636-8400 | [www.ashrae.org](http://www.ashrae.org)

For Release:  
Jan. 19, 2016  
Contact: Jodi Scott  
Public Relations  
678-539-1140  
[jscott@ashrae.org](mailto:jscott@ashrae.org)

## Guidance on New Compliance Path for 90.1-2016 Now Available

ATLANTA – A newly published document from ASHRAE and IES gives users of their energy efficiency standard immediate access to an optional third path for compliance, providing more flexibility for the industry.

Standard 90.1-2013 Appendix G: Performance Rating Method is an excerpt from ANSI/ASHRAE/IES Standard 90.1 (I-P), *Energy Standard for Buildings Except Low-Rise Residential Buildings*. The document gives users immediate access to selected addenda slated to be published in the 2016 version of the standard. The majority of the document is comprised of addendum *bm*, which allows Appendix G to be used as a compliance path within the standard.

“This document is being provided at the request of users,” Drake Erbe, chair of the Standard 90.1 committee, said. “This is the first time ASHRAE and IES have made available an interim clean publication of a portion of Standard 90.1, and we are doing so now because users have expressed a critical need for this guidance. Several entities have expressed interest in developing programs based on the revised appendix. This release also gives advanced notice to software developers that may be interested in automating the process of creating the Appendix G baseline.”

Erbe notes that the guidance in addendum *bm* had two significant impacts on Appendix G.

“Previously Appendix G was used only to rate ‘beyond code’ performance of buildings but could not be used to demonstrate compliance with the base 90.1 standard,” he said. “Now the standard provides that compliance path and gives credit for integrated design resulting in energy savings such as efficient use of building mass, optimized building orientation, efficient HVAC&R system selection and right sizing of HVAC&R equipment.”

Using this new version of Appendix G to show compliance with the 2016 version of the standard, the proposed building design needs to have a Performance Cost Index (PCI) less than that shown in Table 4.2.1.1 based on building type and climate zone.

The second change is that the baseline design is now fixed at a certain level of performance, the stringency of which is expected not to change with subsequent versions of the standard. By this, a building of any era can be rated using the same method with the same baseline of compliance. The intent is that any building energy code or beyond-code program can use this methodology and simply set the appropriate target for their needs analogous to those in the table. Therefore, a beyond-code program may wish to set a target less than is shown in the table (a target of 0 is a net zero building), while compliance with a previous version of the standard may wish to set a target above what is shown. Because unregulated loads are not included in the compliance target in Table 4.2.1.1, beyond-code programs that encourage improvement in unregulated loads may wish to modify the target to include those loads.

***Continued on next page***

Like us on Facebook | Follow us on Twitter | Join the conversation on ASHRAExCHANGE



# News

---

1791 Tullie Cir. NE | Atlanta, Ga. 30329-2305 | 404-636-8400 | [www.ashrae.org](http://www.ashrae.org)

## ***Continued from previous page***

Other addenda included in the excerpt are:

- Addendum *k* directs the modeler to use the default assemblies in Appendix A for baseline opaque envelope assemblies.
- Addendum *r* establishes the hierarchy of the decision-making process for selecting baseline HVAC systems.
- Addendum *z* provides detail on the simulation of base-line building heat pumps, including how auxiliary heat is used in conjunction with heat-pump heating.
- Addendum *aa* provides direction regarding when it is appropriate to model a heating-only system in Appendix G.
- Addendum *ad* clarifies when baseline HVAC systems should be modeled with preheat coils.
- Addendum *dx* makes changes to the baseline lighting power allowances in Appendix G.

Erbe noted that while it is likely that the version of Appendix G published in the 2016 edition of the standard will include additional changes to Appendix G, it is not likely that they will be as extensive as those included in addendum *bm*. The primary focus is to make the new methodology with a fixed baseline available so users become familiar with it.

The cost of Standard 90.1-2013 Appendix G: Performance Rating Method—Excerpt from ANSI/ASHRAE/IES Standard 90.1-2013 (I-P) is \$41 (\$35, ASHRAE members).

To order, visit [www.ashrae.org/bookstore](http://www.ashrae.org/bookstore) or contact ASHRAE Customer Contact Center at 1-800-527-4723 (United States and Canada) or 404-636-8400 (worldwide) or fax 678-539-2129.

ASHRAE, founded in 1894, is a global society advancing human well-being through sustainable technology for the built environment. The Society and its more than 54,000 members worldwide focus on building systems, energy efficiency, indoor air quality, refrigeration and sustainability. Through research, standards writing, publishing, certification and continuing education, ASHRAE shapes tomorrow's built environment today. More information can be found at [www.ashrae.org/news](http://www.ashrae.org/news).

 Like us on Facebook |  Follow us on Twitter |  Join the conversation on ASHRAEExchange



# News

---

1791 Tullie Cir. NE | Atlanta, Ga. 30329-2305 | 404-636-8400 | [www.ashrae.org](http://www.ashrae.org)

For Release:  
Jan. 22, 2016  
Contact: Jodi Scott  
Public Relations  
678-539-1140  
[jscott@ashrae.org](mailto:jscott@ashrae.org)

## **New ASHRAE Application Automates Compliance Calculations for Standard 90.1-2010**

ATLANTA – A new web application from ASHRAE automates the calculations needed to show a building project's compliance with Standard 90.1-2010.

The 90.1 ECB web application is a tool for modeling compliance with ANSI/ASHRAE/IES 90.1-2010, *Energy Standard for Buildings Except Low-Rise Residential Buildings*, using the Energy Cost Budget (ECB) method in the standard.

The application allows users to input project parameters and then calculate the proposed design's projected performance and compliance, with the results exportable in a workable spreadsheet for project use," Drake Erbe, chair of the Standard 90.1 committee, said.

The application is accessible from desktop, tablet or other device. It allows users to store project information in one place for easy reference and comparison.

The app is free of charge to users. To learn more, visit [901ECB.ashrae.org](http://901ECB.ashrae.org).

ASHRAE, founded in 1894, is a global society advancing human well-being through sustainable technology for the built environment. The Society and its more than 54,000 members worldwide focus on building systems, energy efficiency, indoor air quality, refrigeration and sustainability. Through research, standards writing, publishing, certification and continuing education, ASHRAE shapes tomorrow's built environment today. More information can be found at [www.ashrae.org/news](http://www.ashrae.org/news).

Like us on Facebook | Follow us on Twitter | Join the conversation on ASHRAExCHANGE



# News

1791 Tullie Cir. NE | Atlanta, Ga. 30329-2305 | 404-636-8400 | [www.ashrae.org](http://www.ashrae.org)

For Release:  
Jan. 23, 2016  
Contact: Jodi Scott  
Public Relations  
678-539-1140  
[jscott@ashrae.org](mailto:jscott@ashrae.org)

## ASHRAE Recognizes Members for Outstanding Industry and Society Achievements

ATLANTA – Fifty-four people were recognized for their contributions to ASHRAE and the industry at the Society's 2016 Winter Conference, Jan. 23-27, Orlando, Fla.

The F. Paul Anderson Award, ASHRAE's highest for technical achievement, is given for notable achievement of outstanding services performed in the HVAC&R field. The recipient is Presidential Member Thomas E. Watson, Fellow ASHRAE, Life Member, director of the Daikin Learning Institution, Daikin Applied, Staunton, Virginia.

The ASHRAE Hall of Fame honors deceased members of the Society who have made milestone contributions to the growth of ASHRAE-related technology or the development of ASHRAE as a society. Inductees are Calvin D. MacCracken, who with more than 200 inventions and 80 patents is best known for his pioneering work in off peak cooling energy costs savings and energy conserving options in ice rinks. His inventions include flexible duct heating/cooling, a roller-type hot dog cooker, comfort controls for the Apollo astronauts' space suits, plastic mat ice rink, and roll-out solar collectors; and John Edwin Starr, a pioneer in development of small sized refrigeration systems and refrigeration by pipeline from central stations, as well as founder and the first president of The American Society of Refrigerating Engineers (ASRE), an ASHRAE predecessor society, in 1904-05.

Fellow ASHRAE is a membership grade that recognizes members who have attained distinction and made substantial contributions in HVAC&R such as education, research, engineering design and consultation, publications and mentoring. The Society elevated 17 members to the grade of Fellow:

- Peter R. Armstrong, Ph.D., P.E., Masdar Institute, Abu Dhabi, United Arab Emirates.
- Clive Broadbent, C.P.Eng., Life Member, director, Clive Broadbent and Associates Pty. Ltd., Campbell Australian Capital, Australia.
- Wan Ki Chow, Ph.D., C.Eng., R.P.E., chair professor of Architectural Science and Fire Engineering, Department of Building Services Engineering, Hong Kong Polytechnic University, Hong Kong, China.
- Suhas D. Deshpande, principal consultant, S.D. Deshpande Consulting Engineers, Pune, Maharashtra, India.
- William D. Gerstler, Ph.D., senior mechanical engineer, General Electric-Global Research, Niskayuna, New York.
- Kristin Heinemeier, Ph.D., P.E., principal engineer, Energy Efficiency Center, University of California, Davis.
- Marisa Jimenez de Segovia, president, Air-Care de Mexico, Monterrey, Nuevo Leon, Mexico.
- Kishor Khankari, Ph.D., president, AnSight LLC., Ann Arbor, Michigan.
- Kwang Woo Kim, Ph.D., P.E., a professor, Department of Architecture and Architectural Engineering, Seoul National University, Seoul, South Korea.
- Dennis R. Landsberg, Ph.D., P.E., Life Member, BEAP, president, L&S Energy Services Inc., Clifton Park, New York, and Henderson, Nevada.
- Patrick C. Marks, P.E., an engineering manager, Johnson Controls, York, Pennsylvania.
- John A. Murphy, an applications engineer, Trane, a business of Ingersoll Rand, La Crosse, Wisconsin.
- Riyaz A. Papar, P.E., director, Global Energy Services, Hudson Technologies Co.
- Andy Pearson, Ph.D., C.Eng., group engineering director, Star Refrigeration LTD., Glasgow, United Kingdom.
- Mukund Sudhakar Ranade, a self-employed professional consultant, Pune, Maharashtra, India.
- Mick Schwedler, P.E., an applications engineering manager, Trane, a brand of Ingersoll Rand, La Crosse, Wisconsin.
- Om Taneja, Ph.D., P.E., an independent consultant, Associated Inspections and Consulting Engineers, Kendell Park, New Jersey.



Like us on Facebook | Follow us on Twitter | Join the conversation on ASHRAE<sup>EXCHANGE</sup>



# News

1791 Tullie Cir. NE | Atlanta, Ga. 30329-2305 | 404-636-8400 | [www.ashrae.org](http://www.ashrae.org)

## *Continued from previous page*

The ASHRAE Technology Awards recognize outstanding achievements by ASHRAE members who have successfully applied innovative building design. Their designs incorporate ASHRAE standards for effective energy management and indoor air quality and serve to communicate innovative systems design. Winning projects are selected from entries earning regional awards. First place recipients are:

- Benjamin A. Skelton, P.E., BEMP, president, Cyclone Energy Group, Chicago, Ill., in the new commercial buildings category for the Walgreens Net Zero Store, Evanston, Ill. The building is owned by Walgreen Co.
- Dylan T. Connelly, associate, Integral Group, Oakland, Calif., in the existing commercial buildings category for DPR Construction's San Francisco Net Positive Energy Office. The building is owned by DPR Construction.
- Nicolas Lemire, Ing., HFDP, president/principal, Pageau Morel and Associates, Montreal, Quebec, in the new educational facilities category for the Anne-Marie Edward Science Building at John Abbott College, Sainte-Anne-De-Bellevue, Quebec. The building is owned by the college.
- Ken Warren, P.E., capital project manager, Port of Seattle (Wash.), in the new industrial facilities or processes category for the Sea-Tac Airport Pre-Conditioned Air project. The building is owned by the Port of Seattle.
- Jonathan M. Heller, P.E., principal engineer, Ecotope Inc., Seattle, Wash., receives first place in the residential category for the Stack House Apartments. The building is owned by Stack House Acquisition LLC.

The ASHRAE Student Design Competition focused on a three-story classroom and office building in Doha, Qatar.

First place recipients in the HVAC System Selection are from the University of Nebraska-Lincoln. Team members are Brianna Brass, currently seeking a Master's of Architectural Engineering degree, University of Nebraska-Lincoln; Matthew Easlon, Feinschule Hagwon, Gwangju, Korea; Mary Kleinsasser, currently seeking a Master's of Architectural Engineering degree, University of Nebraska-Lincoln; Ben MacKenzie, mechanical engineering intern, Affiliated Engineers, Madison, Wis.; and Rachel Obenland, currently seeking a Master's of Architectural Engineering degree, University of Nebraska-Lincoln.

First place recipients in the HVAC Design Calculations also are from the University of Nebraska-Lincoln. Team members are Kristin Hanna, currently seeking a Master's of Architectural Engineering degree, University of Nebraska-Lincoln; Garrett Johnson; Mark Wilder, mechanical intern, M.E. Group, Omaha, Neb.

First place in the category of Integrated Sustainable Building Design goes to a team from Portland State University. Team members are Krestina Aziz, architectural designer, Otak, Portland, Ore.; Adam Buchholz, estimator, Johnson Air Products, Portland, Ore.; Nicole Dunbar, mechanical designer, Mazzetti Inc., Portland, Ore.; Lee H. Han, mechanical engineer, PAE Consulting Engineers Inc., Seattle, Wash.; Joel Joiner, project manager, Hydro-Temp Mechanical, Wilsonville, Ore.; Osman Sarper Kucuk; Blake Reynolds, mechanical designer, Interface Engineering, Portland, Ore.; Natalie Sherwood, mechanical designer, Interface Engineering, Portland, Ore.; Huy Tran, CLEARResult, Portland, Ore.; and Alex Wilson, graduate student, Portland State University.

For the Applied Engineering Challenge, students were required to design a collapsible portable conditioned shelter that can be assembled in the field to assist in the treatment of a victim of heat illness, including heat exhaustion and heat stroke.

The first place Applied Engineering Challenge recipients are from California Polytechnic State University, San Luis Obispo: Miren Aizpirtarte, project engineer, Critchfield Mechanical Inc., San Jose, Calif.; Cinthya Mendez, mechanical engineer, Western Allied Mechanical, Menlo Park, Calif.; Julia Stone, mechanical facilities engineer, Intel, Chandler, Ariz.; and Willis Tang, design engineer, ACCO Engineered Systems, Glendale, Calif.

The E.K. Campbell Award of Merit honors an individual for outstanding service and achievement in teaching and is presented by the Life Members Club. The recipient is Michael M. Ohadi, Ph.D., Fellow ASHRAE, a professor of mechanical engineering and co-founder of the Center for Environmental Energy Engineering, University of Maryland, College Park, Maryland.

## *Continued on next page*

 Like us on Facebook |  Follow us on Twitter |  Join the conversation on ASHRAEExCHANGE



# News

---

1791 Tullie Cir. NE | Atlanta, Ga. 30329-2305 | 404-636-8400 | [www.ashrae.org](http://www.ashrae.org)

For Release:  
Jan. 23, 2016  
Contact: Jodi Scott  
Public Relations  
678-539-1140  
[jscott@ashrae.org](mailto:jscott@ashrae.org)

## ***Continued from previous page***

The ASHRAE Award for Distinguished Public Service recognizes members who have performed outstanding public service in their community and, in doing so, have helped to improve the public image of the engineer. The recipient is Erich Binder, president, Erich Binder Consulting Ltd., Calgary, Alberta.

The John F. James International Award recognizes a member who has done the most to enhance the Society's international presence. The recipient is Florentino Roson Rodriguez, Ing., president, Supercontrols S.A., Buenos Aires, Argentina.

The ASHRAE Pioneers of Industry Award recognizes deceased individuals who have made milestone contributions to the growth of HVAC&R. Recipients are Daniel Livingston Holden (1837- 1924), who was a charter member of The American Society of Refrigerating Engineers and a pioneer of the commercial refrigeration industry.; and Benjamin Franklin Sturtevant (1833 – 1890), the founder of the air-side HVAC industry, having invented the equipment and starting the first company specializing in engineering and manufacturing of these systems.

Honorary Members, elected by the Board of Directors are defined as notable persons of preeminent professional distinction. Recipients are P.A. Hancock, Ph.D., Provost Distinguished Research Professor, Pegasos Professor and University Trustee chair, the University of Central Florida, Orlando; and Terry M. Manon, who retired from the Trane Co., in 2009 as director of Trane commercial systems air handling systems. He resides in Danville, Kentucky.

ASHRAE, founded in 1894, is a global society advancing human well-being through sustainable technology for the built environment. The Society and its more than 50,000 members worldwide focus on building systems, energy efficiency, indoor air quality, refrigeration and sustainability. Through research, standards writing, publishing, certification and continuing education, ASHRAE shapes tomorrow's built environment today. More information can be found at [www.ashrae.org/news](http://www.ashrae.org/news).

 Like us on Facebook |  Follow us on Twitter |  Join the conversation on ASHRAEExCHANGE



# News

---

1791 Tullie Cir. NE | Atlanta, Ga. 30329-2305 | 404-636-8400 | [www.ashrae.org](http://www.ashrae.org)

For Release:  
Jan. 28, 2016  
Contact: Jodi Scott  
Public Relations  
678-539-1140  
[jscott@ashrae.org](mailto:jscott@ashrae.org)

## ASHRAE LowDown Showdown Seeks Participants for 2016 Conference

ATLANTA – After the success and popularity of the first modeling challenge, the ASHRAE LowDown Showdown will be a part of the ASHRAE and IBPSA-USA SimBuild 2016 Conference, Aug. 10-12, in Salt Lake City, Utah. The Showdown is a modeling challenge designed to showcase the work of several teams competing to model a net zero or below building. The competition gives conference attendees the opportunity to work with vendors and developers to showcase their abilities using the vendor's simulation tools, innovative workflows and creative problem solving to model a high performance building.

The Showdown provides a fun way of encouraging participation, demonstrating tool usage in building modeling and for participants to present their models to their peers and colleagues.

### How to Join the ASHRAE LowDown Showdown

Each team will be comprised of volunteers who will sign up to play a role on each team, such as:

- Engineers
- Architects
- Designers
- Energy modelers

The teams will be given a “baseline building” and then each team will have several months to work together to create their proposed building.

At the conference, on the day of the Showdown, each team will present their results. Teams will be scored on a number of criteria.

The deadline to sign up to participate is **Monday, Feb. 15**. Join a team by signing up here: <https://www.research.net/ashraelowdownshowdown16>.

Participation in the ASHRAE LowDown Showdown is available to all registered attendees of the ASHRAE and IBPSA-USA SimBuild 2016: Building Performance Modeling Conference. Registration will open this spring.

**Call for Presenters**

***Continued on next page***

 Like us on Facebook |  Follow us on Twitter |  Join the conversation on ASHRAExCHANGE



# News

---

1791 Tullie Cir. NE | Atlanta, Ga. 30329-2305 | 404-636-8400 | [www.ashrae.org](http://www.ashrae.org)

For Release:  
Jan. 28, 2016  
Contact: Jodi Scott  
Public Relations  
678-539-1140  
[jscott@ashrae.org](mailto:jscott@ashrae.org)

## ***Continued from previous page***

The Call for Presenters is now open. Abstracts (400 or less words in length) and a 100-word promotional abstract are due Feb. 3, 2016. Papers are not required for accepted presentation proposals. For more information or to submit an abstract, go to [www.ashrae.org/simbuild2016](http://www.ashrae.org/simbuild2016).

“The first jointly organized conference was held in 2014 and was a huge success in its ability to bring the building energy analysis and performance simulation community together and provide the conference content to serve attendees,” Dennis Knight, Conference chair, said. “The ASHRAE and IBPSA-USA SimBuild 2016 Conference seeks to build upon that success and further improve the industry’s ability to accurately model building performance.” Modelers, software developers, owner and researchers will address the practices of energy modeling and building performance simulation using existing simulation tools, software development, and future simulation research and applications.

ASHRAE, founded in 1894, is a global society advancing human well-being through sustainable technology for the built environment. The Society and its more than 54,000 members worldwide focus on building systems, energy efficiency, indoor air quality, refrigeration and sustainability. Through research, standards writing, publishing, certification and continuing education, ASHRAE shapes tomorrow’s built environment today. More information can be found at [www.ashrae.org/news](http://www.ashrae.org/news).

IBPSA-USA is the United States regional affiliate of the [International Building Performance Simulation Association \(IBPSA\)](http://www.ibpsa.org). The mission of IBPSA-USA is to advance and promote the science of building simulation in order to improve the design, construction, operation and maintenance of new and existing buildings in the United States.

 Like us on Facebook |  Follow us on Twitter |  Join the conversation on ASHRAEexchange



# News

---

1791 Tullie Cir. NE | Atlanta, Ga. 30329-2305 | 404-636-8400 | [www.ashrae.org](http://www.ashrae.org)

For Release:  
Feb. 1, 2016  
Contact: Jodi Scott  
Public Relations  
678-539-1140  
[jscott@ashrae.org](mailto:jscott@ashrae.org)

## **User's Manual to ASHRAE/USGBC/IES Green Standard Available**

ATLANTA – A newly published User's Manual clarifies the intent and implementation of the building industry's foremost green building standard by explaining its requirements and providing example applications.

The User's Manual to ANSI/ASHRAE/USGBC/IES Standard 189.1-2014, *Standard for the Design of High-Performance, Green Buildings Except Low-Rise Residential Buildings*, is intended to help engineers, architects, and contractors understand and comply with the standard and to help code officials and others enforce its requirements. This new version of the User's Manual updates the version published in 2010, which covered the content of Standard 189.1-2009.

Standard 189.1 addresses the areas of site sustainability; water-use efficiency; energy efficiency; indoor environmental quality; the building's impact on the atmosphere, materials and resources; and construction and plans for operation. The standard is published by ASHRAE, the Illuminating Engineering Society of (IES) and the U.S. Green Building Council (USGBC). For complete information on the standard, including a readable copy, visit [www.ashrae.org/greenstandard](http://www.ashrae.org/greenstandard).

"The 2014 standard updates the 2011 standard through 67 individual addenda that modified all sections of the standard," Andrew Persily, chair of the Standard 189.1 committee, said. "The User's Manual is vital in helping the industry understand these updated provisions, which will help further reduce building energy and environmental impacts through high performance design, construction and operation while providing indoor environments that support the activities of building occupants."

***Continued on next page***



 Like us on Facebook | 
  Follow us on Twitter | 
  Join the conversation on ASHRAEExCHANGE



# News

1791 Tullie Cir. NE | Atlanta, Ga. 30329-2305 | 404-636-8400 | [www.ashrae.org](http://www.ashrae.org)

For Release:  
 Feb. 1, 2016  
 Contact: Jodi Scott  
 Public Relations  
 678-539-1140  
[jscott@ashrae.org](mailto:jscott@ashrae.org)

## *Continued from previous page*

Among the many changes in the 2014 edition of Standard 189.1 that are addressed in the User's Manual are:

- Change of all site requirements to mandatory, with the previous prescriptive and performance options moved to the mandatory requirements.
- Addition of minimum storm water management requirements for minimizing the impact of storm water discharge from the project site.
- Inclusion of new requirements for bicycle parking; preferred park for low-emission, hybrid and electric vehicles; and a predesign assessment of native and invasive plants.
- Adjustment of minimum on-site renewable energy requirements to provide two clear prescriptive paths for including on-site renewable energy in a project.
- Establishment of two performance options for demonstrating compliance with the minimum energy efficiency requirements.
- Addition of lighting quality to the scope of the indoor environmental quality section as well as requirements for lighting controls in specific space types.
- Clarification of the requirements for air sealing of filtration and air-cleaning equipment; and new requirements for pre-occupancy ventilation.
- Addition of minimum moisture control requirements to reduce negative impacts associated with unintentional moisture migration through the building envelope.
- Addition of new requirements for multiple-attribute product declaration or certification and maximum mercury content of certain types of electric lamps.
- Update of requirements related to the environmental impacts associated with the idling of construction vehicles and new requirements to reduce the entry of airborne contaminants associated with construction areas.

The cost of the User's Manual is \$105 (\$89, ASHRAE members).

To order, visit [www.ashrae.org/bookstore](http://www.ashrae.org/bookstore) or contact ASHRAE Customer Contact Center at 1-800-527-4723 (United States and Canada) or 404-636-8400 (worldwide) or fax 678-539-2129.

ASHRAE, founded in 1894, is a global society advancing human well-being through sustainable technology for the built environment. The Society and its more than 54,000 members worldwide focus on building systems, energy efficiency, indoor air quality, refrigeration and sustainability. Through research, standards writing, publishing, certification and continuing education, ASHRAE shapes tomorrow's built environment today. More information can be found at [www.ashrae.org/news](http://www.ashrae.org/news).